



Photoinstallation, *DECOR*  
Artist: Johanna Mårtensson & Ida Lundén, 2012





Solda II. Meclis Binası, Sağda Ankara Palas Oteli, 1923, Ankara



Ankara II. TBMM inşaa halinde (Korgun arışıvi), Fotoğraf Ankara Palas Önünden çekilmiş, Ankara Palas inşaatı da devam etmektedir

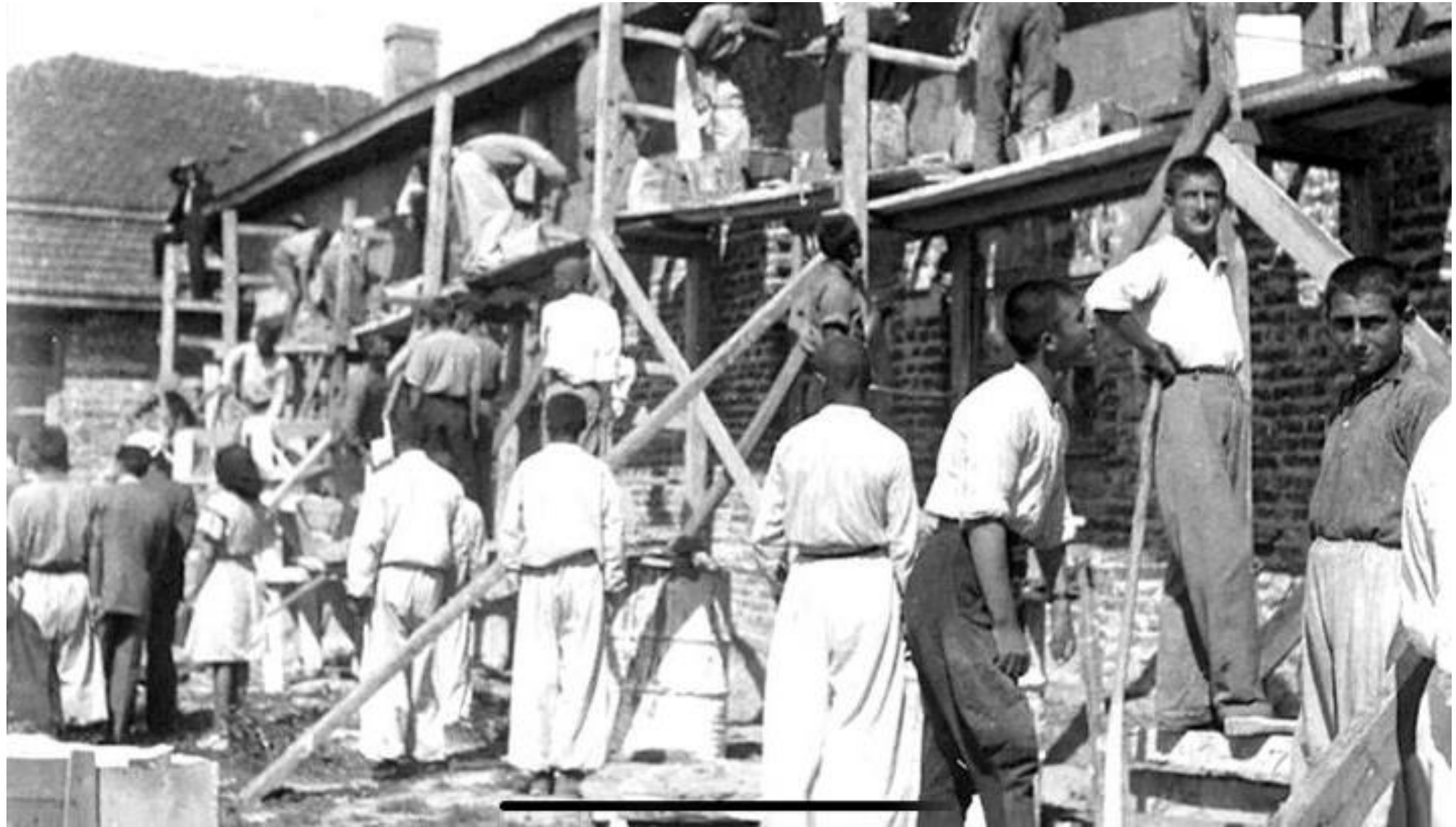


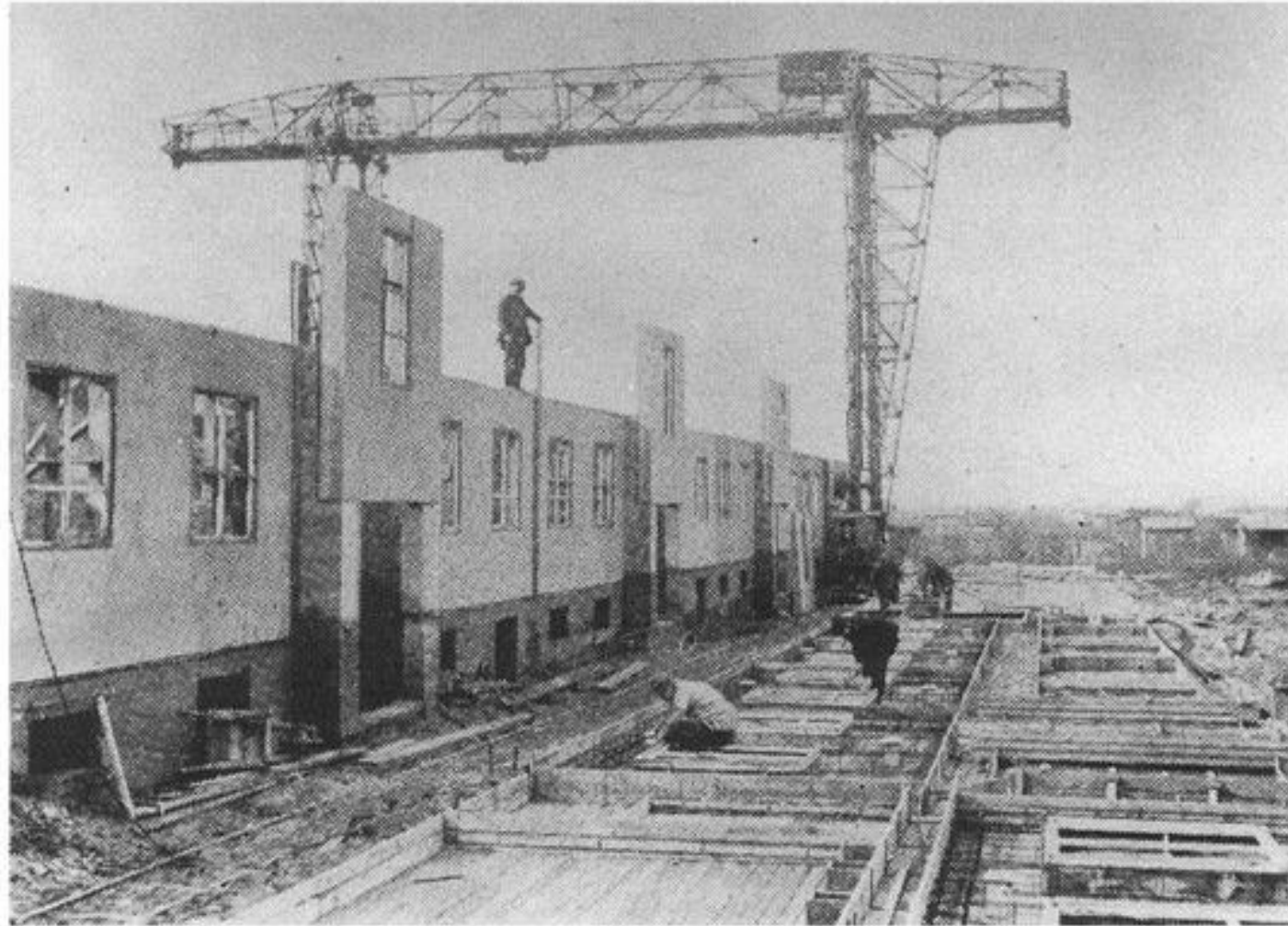
**MİMAR KEMALETTİN**  
**1870 -1927**



**Gazi Muallim Mektebi – Gazi Üniversitesi Rektörlük Binası**  
**1927-1929**

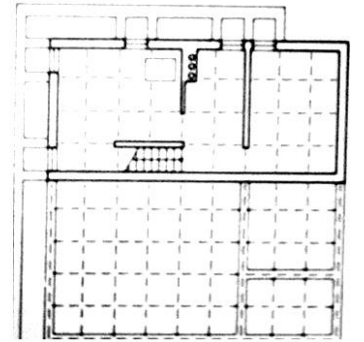
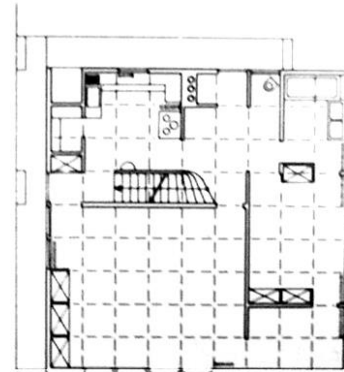
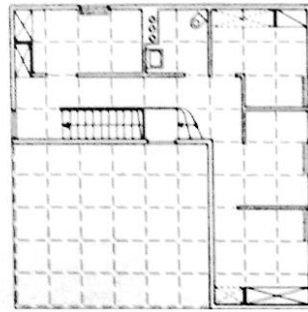
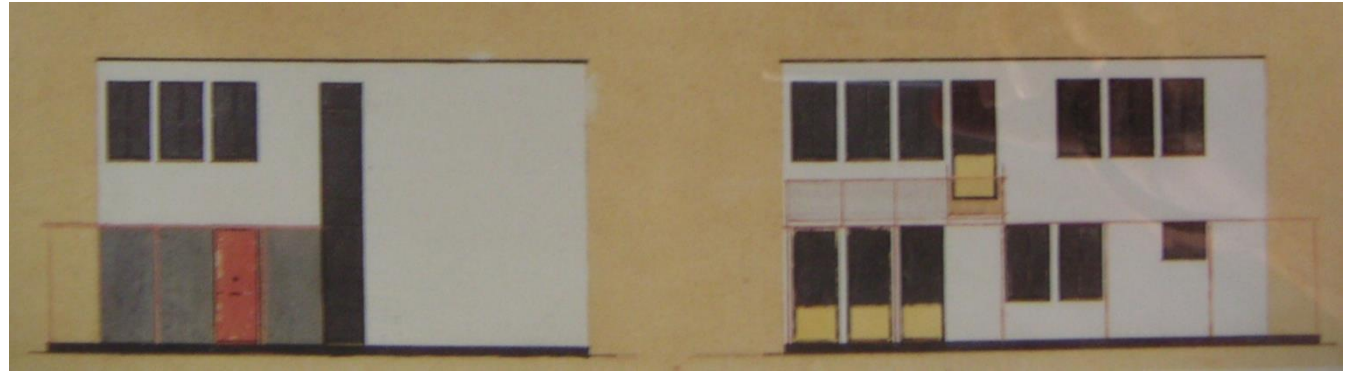




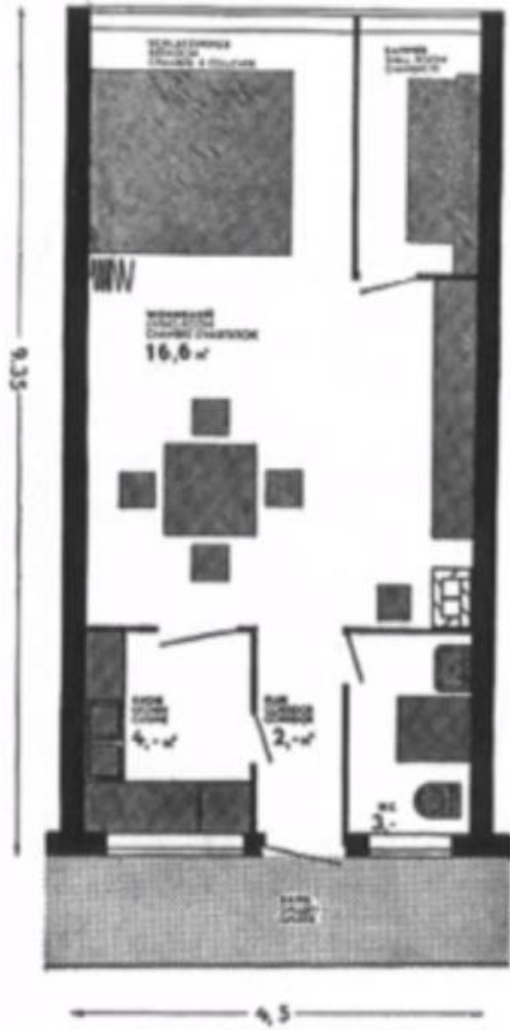


**Martin Wagner: Experimental Siedlung in Sewanstraße/Splanemannstraße in Berlin-Friedrichsfelde (1924–1925)**





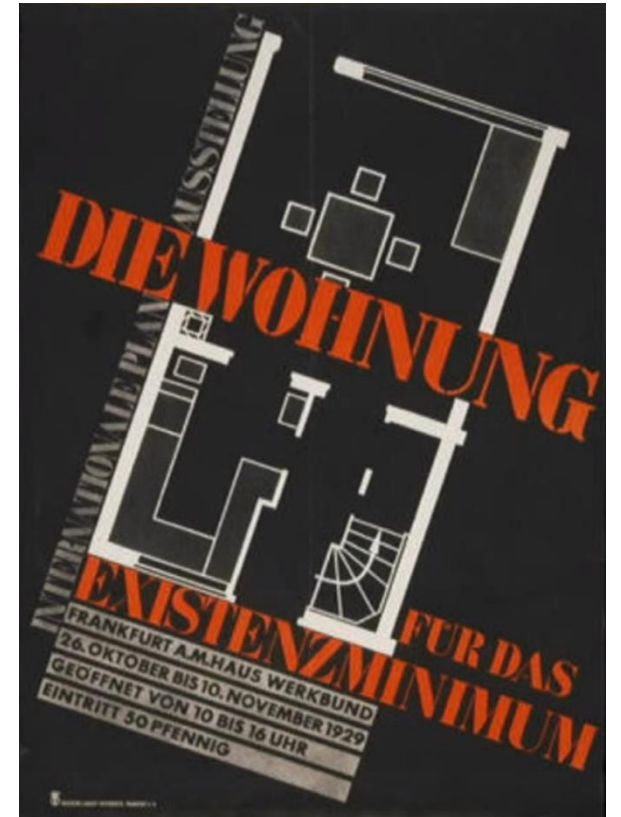
**Walter Gropius**  
**Weissenhofsiedlung, Stuttgart, 1927**



### Frankfurt a. M.

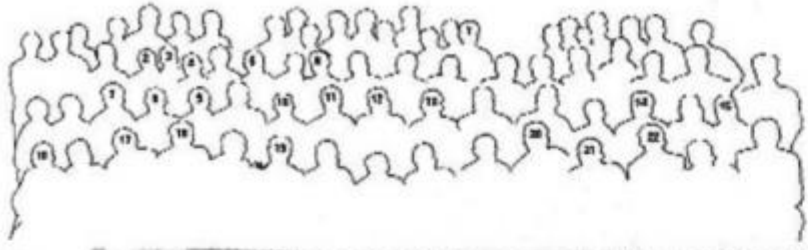
Small apartment in gallery-type house; narrow frontage and deep section of block.

Floor area 37.5m<sup>2</sup>, 3 beds. A folding partition separates bedroom from living area. Windows face southeast and northwest.

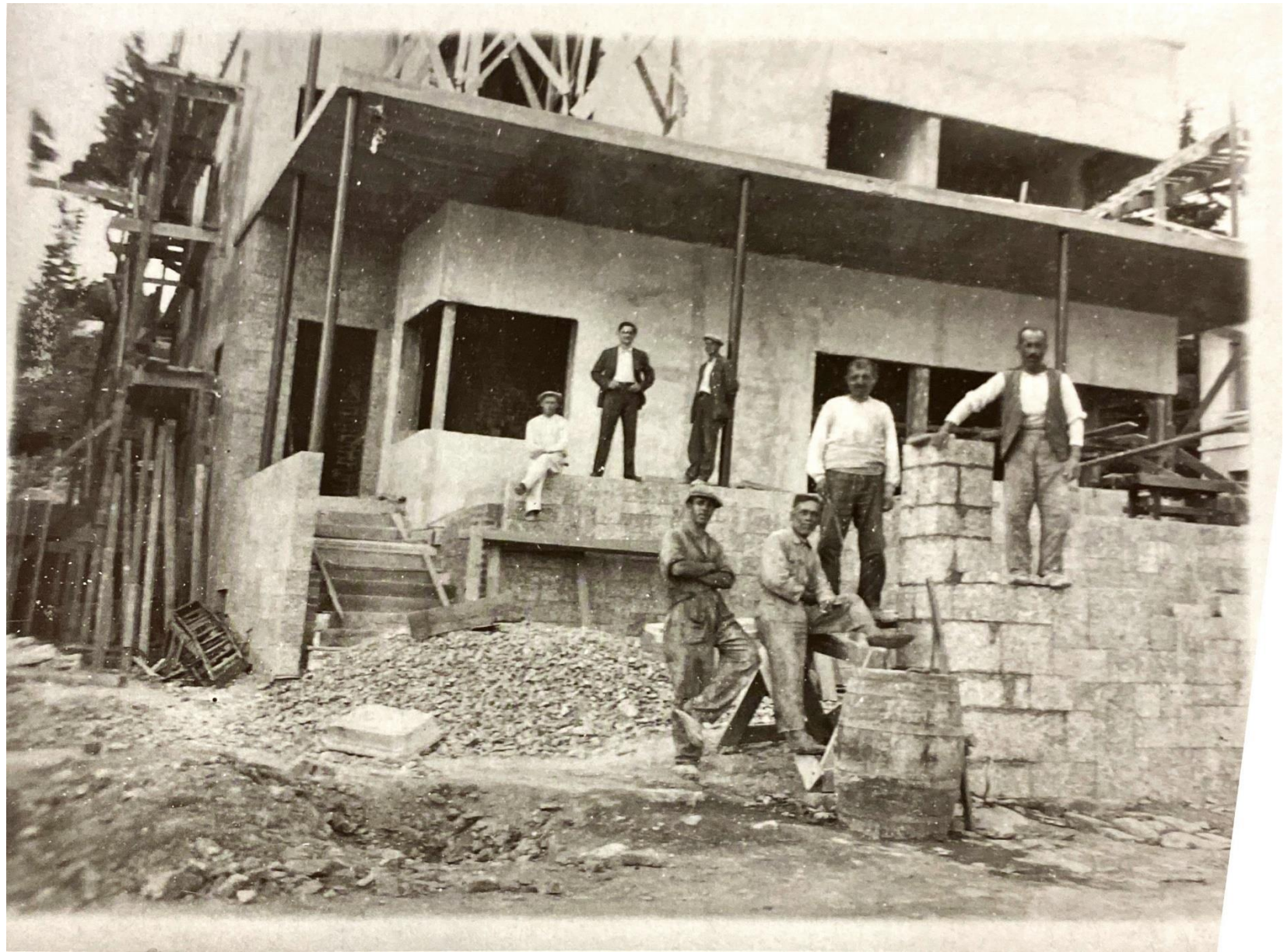


Ernst May, Das Neue Frankfurt

Frankfurt am Main, 1927



1933-34 Öğretim yılında Güzel Sanatlar Akademisi Öğretmenleri ve Öğrencileri. 1. Ahmet Hamdi Tanpınar, 2. Leyla Hanım, 3. Rebiî Gorbon, 4. Şeküre Hanım, 5. Asım Mutlu, 6. Muhittin Güreli, 7. Arif Hikmet Holtay, 8. P. Ginter, 9. Leman Tomsu, 10. Mahmut Şükrü bey, 11. Sefa Bey, 12. Ernst Egli, 13. Yazimi Yaver, 14. Sedad Hakkı Eldem, 15. Mahmut Bilen, 16. Kemal Ahmet Aru, 17. Ahsen Yapaner, 18. Fazıl aysu, 19. Ali Saim Ülgen, 20. Muhittin Güven, 21. M. Ali Handan, 22. Kemali Söylemezoğlu.  
(Anılarda Mimarlık, YEM Yayınları)



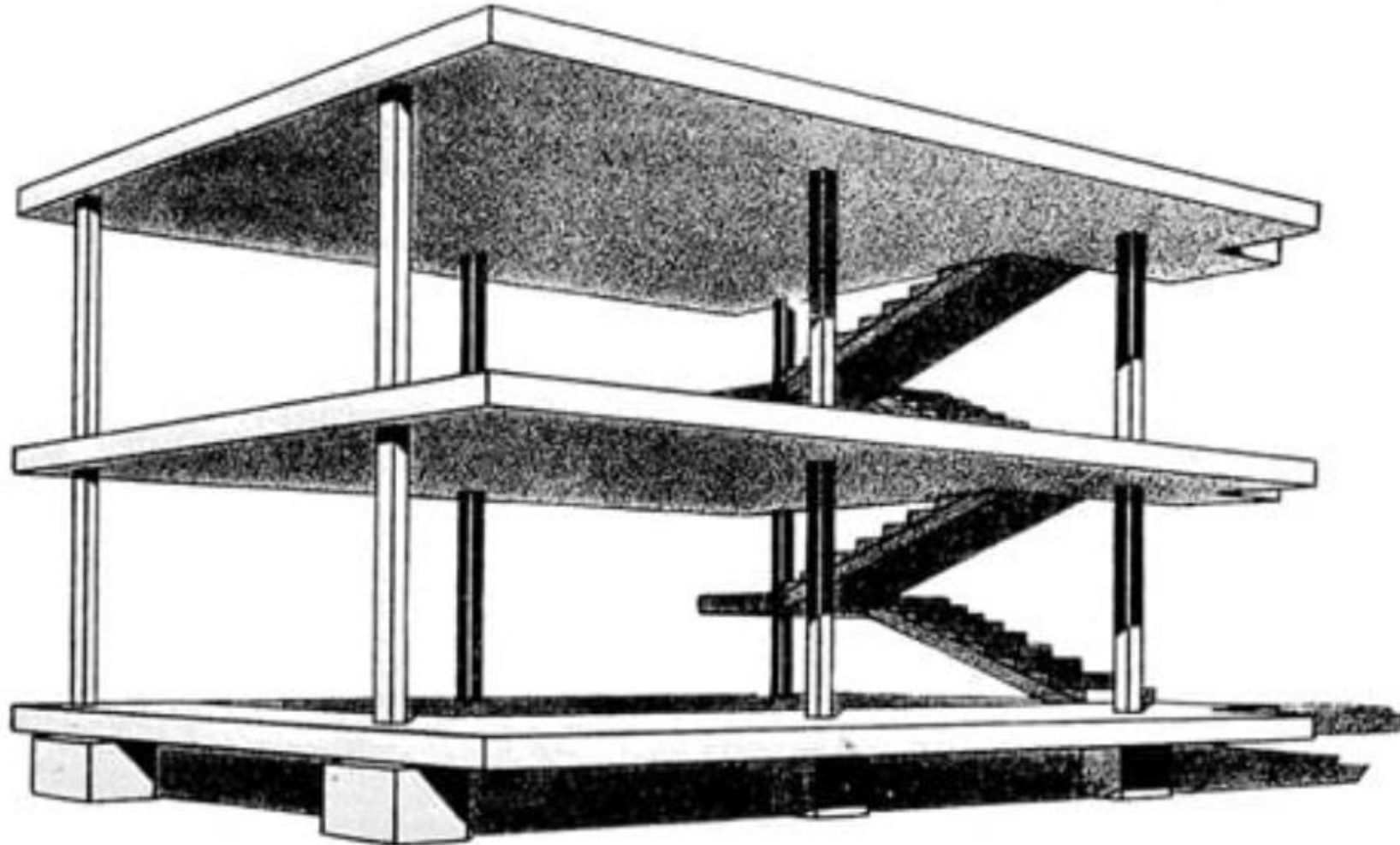


Pruitt Igoe, St. Louis

Source Wikipedia



## DOM-INO SYSTEM

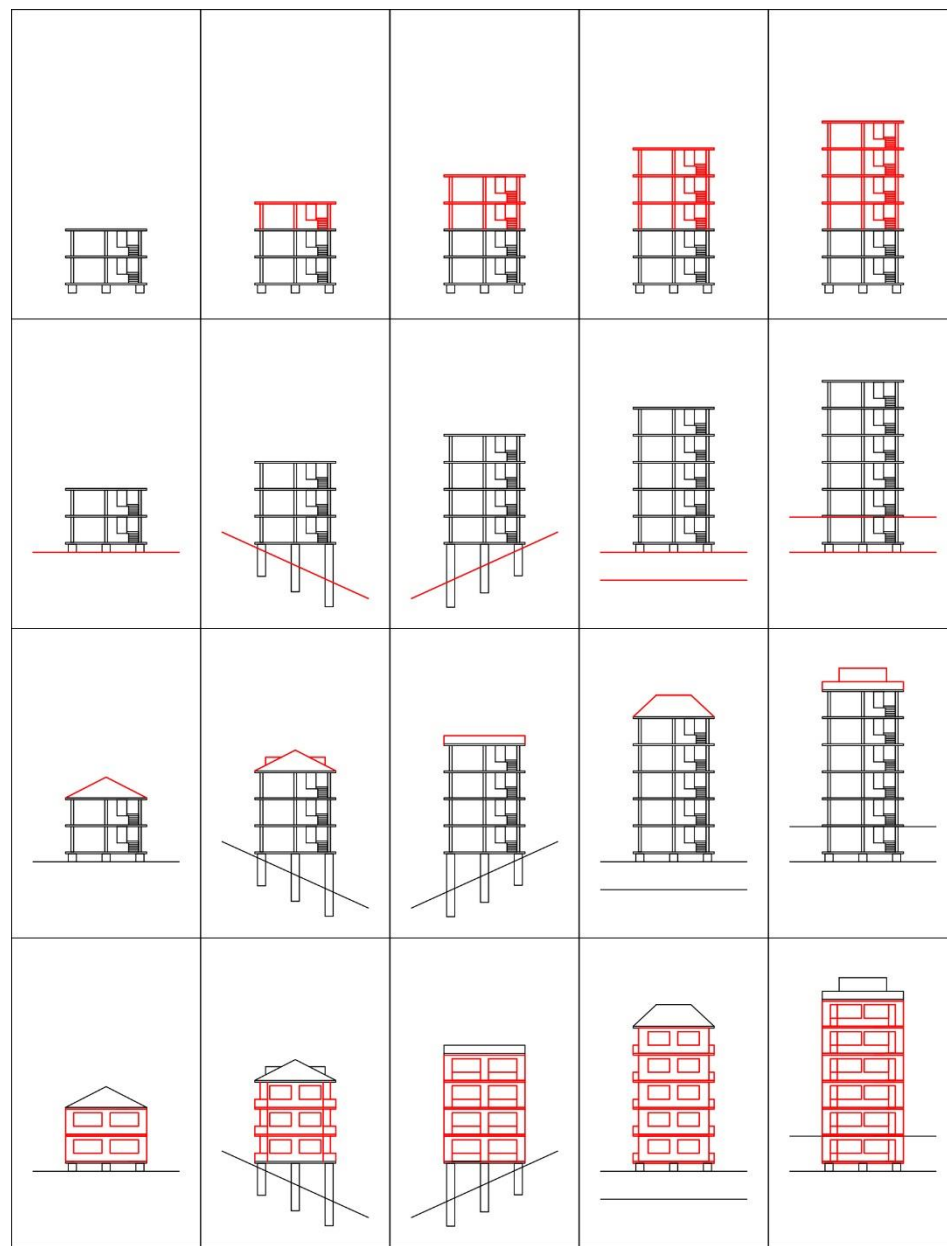


*Perspective view of the Dom-ino system, 1914. Image from Le Corbusier & Pierre Jeanneret, Oeuvre Complète Volume 1, 1910–1929, Les Editions d'Architecture Artemis, Zürich, 1964*











# AFETLER İÇİN HARCANAN BÜTÇENİN DAĞILIMI

